



Flight Management Systems

Thank you for your interest in the FMS Moving Map system.

Additional information is available on our website www.FlightManagementSystems.com

Important Features:

- **Augmented Reality, Overlay Feature** will overlay parcel information on the EO/IR image in real time!
- **“Lock and Forget” Technology**
- True **Slaving** between FLIR, Searchlight and the FMS moving Map
- Capable of integration with **Windows** based dispatch programs
- Software can be purchased separately, allowing phased implementation

We have the solution.

The FMS Moving Map is a fully digital moving map. We use **GIS (Geographic Information Systems)** shape files and create layers of data. This is the same data system your cities planning department uses to create new subdivisions.

Thus, you will have a street on the map before there is a street on the ground. We access your cities parcel address data and we use that data to display actual parcel outlines and highlight the exact address for the flight crew. This allows you to be far more effective when directing ground units to an address.

Augmented Reality Overlay Feature.

FMS will overlay parcel and road information on the FLIR image in real time. No need to switch back and forth between the FLIR and the map.....Everything you need to know is all right there!

Unparalleled Accuracy with “Lock and Forget” Technology:

Tests were flown at 500 Feet AGL, 60 Knots, over the target address. FMS was able to keep the gimbal image within a 125 foot radius at all times, *hands free*.

This amazing accuracy is attained by using an ITAR controlled Inertial Navigation System (INS) Chipset.

What this means to you, is that in a standard orbit, and having the FLIR zoomed in so only 3 houses are on screen, the target house stays on the screen without operator input.

Flight Management Systems has achieved an extremely accurate, map driven slave. The supported gimbals include most FLIR Systems, Wescam and Tamam POP sensors. FMS will also control Spectrolab and Trakka searchlights.

All this, in an easy to understand and user friendly package.

FMS Moving Map Works for you!!

Take advantage of our Experience: 36 years of Aviation, 15 years of mapping and 10 years inside a Law Enforcement Unit.



GIS allows infinite possibilities:

The FMS system is compatible with any Windows based or ESRI software, so you can run your local dispatch software in conjunction with the mapping system. This means familiar COPY/PASTE commands can be used from dispatch software directly into the map to save time and eliminate spelling errors.

A complete flight, or any portion of a flight can be recorded directly into the computer, and replayed later for in flight use, or debriefing back at base. For example: You are involved in a chase and something flies out the window of the suspects car. CNTL I (Incident) takes a screen capture of the map, and you continue the chase. After the suspects have been apprehended, you can bring up the captured file, and direct a ground unit to the exact address where the object flew out of the car.

GIS databases can be used for multiple purposes. For example underwater features, like oyster beds and underground features like pipelines can all be displayed accurately.

Search and Rescue Features are Standard with FMS. Lay out a search pattern, record your flight, mark hot spots or potential targets, are all included with FMS.

We have added a **FIRE ENHANCEMENT** that allows a fire perimeter (or any area of interest, like a flooded area or oil spill) to be marked out on the map by clicking the edges. The area is immediately shaded and the area calculated on the screen. This file can then be down-linked to a command center in real time, or saved and debriefed after the flight. This option allows an accurate measurement without having to fly through the dangerous down wind smoke of a fire and use the aircraft GPS for marking perimeters.

Hot Spots can be collected to a file, downloaded to ground GIS software, and even load GPS coordinates directly into the firefighters handheld GPS. Fire files can be emailed to a remote location and loaded into FMS for the next days search area.

In **EMS** operations we can add data layers that show where the power lines are relative to the roadway, or any other potentially dangerous hazards like cell phone towers. The system can be operated from the back by an EMT, or from the front by a flight officer using the same computer but different keyboards.

The FMS Moving Map is much more than just a map.

If there is any further information you would like, or a specific need you would like to discuss, please feel free to call.

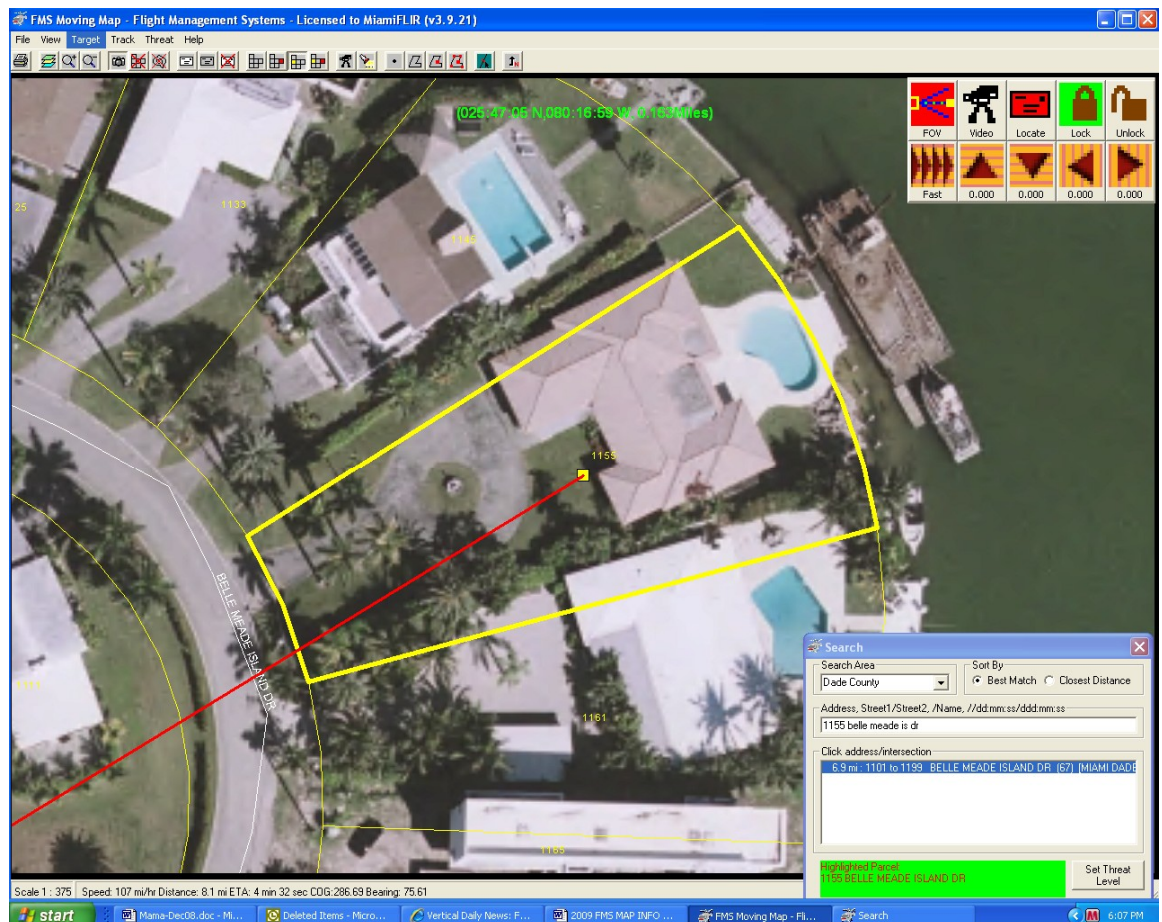
Kindest Regards.

Greg Taylor

President

FMS Moving Map Important Features

- **Accurate** FMS accuracy is within 0.001 degrees. Most Gimbals have 0.1 degrees accuracy so accuracy is a function of gimbal accuracy and gimbal speed.
- **Easy to Learn**, most people are comfortable by the end of their first shift.
- **Current**, Only G.I.S. (**Geographic Information Systems**) data is used for our maps.
- An **“Ortho Photo”** layer can be included, for a daytime picture of the target address.
- **Safety Features** can be added as layers – cell phone towers, electrical wires and towers, runway centerlines, offshore-distance to shore-lines, underwater features, temporary hazards, etc.
- **Threat Level** can be assigned to a known offender’s address, to allow a warning for the approaching ground crews. We can also import your departments database.
- **M.D.T. (Mobile Dispatch Terminal)** software can be run in the same computer, and allows “copy-paste” of addresses directly into the maps “Search” window.
- **Many User Selectable Options.** Auto Zoom, Track Heli, Track Target, Ortho Photo on or off, etc.



Testimonials

Abbotsford Police ---R-44

Flying since Sept 2006

“It goes without saying but if anyone wants a stunningly good reference for your program there will be four of us there, all very thankful for your excellent product.”

Dean Russell
Chief Pilot
Abbotsford Police Department
Air Support Unit
(604)-329-5001
dean@atlantismotorgroup.com

Fontana Police Service - - R-44

Flying since January 2005

“The guys love this map. They can be competent with most of the features before the end of their first shift. Training is not an issue.”

Leo Bell
Chief Pilot
Fontana Police Service
California Aviation Services
(909) 354-5274
leo@caaviationservices.com

Countryside Illinois - - OH-58

Flying since Oct 2005

ILEAS (Illinois Law Enforcement Alarm System)

“Your Moving Map system is easy to use for tracking the helicopter and target locations. We have found this to be a great tool that is both user-friendly and precise. We are presently using it on a statewide basis-”

Chief of Police
Timothy Swanson
Countryside Police Department
5550- S. East Ave,
Countryside, IL 60525
(708) 352-2171
tswanson@countryside-il.org